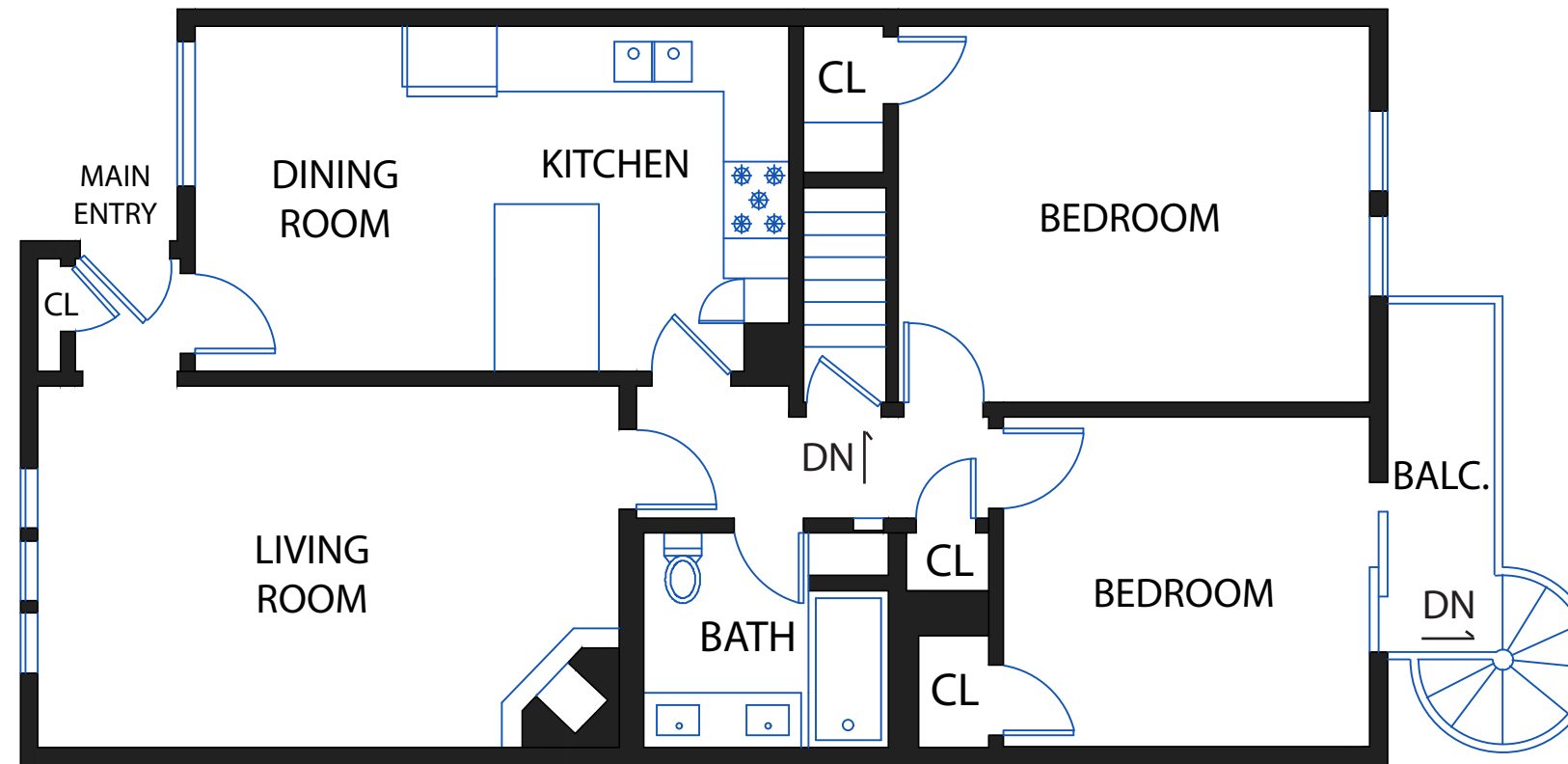


126 PARK STREET

MAIN LEVEL

LIVING
APPROX. 1112 SQF

DECK
APPROX. 46 SQF



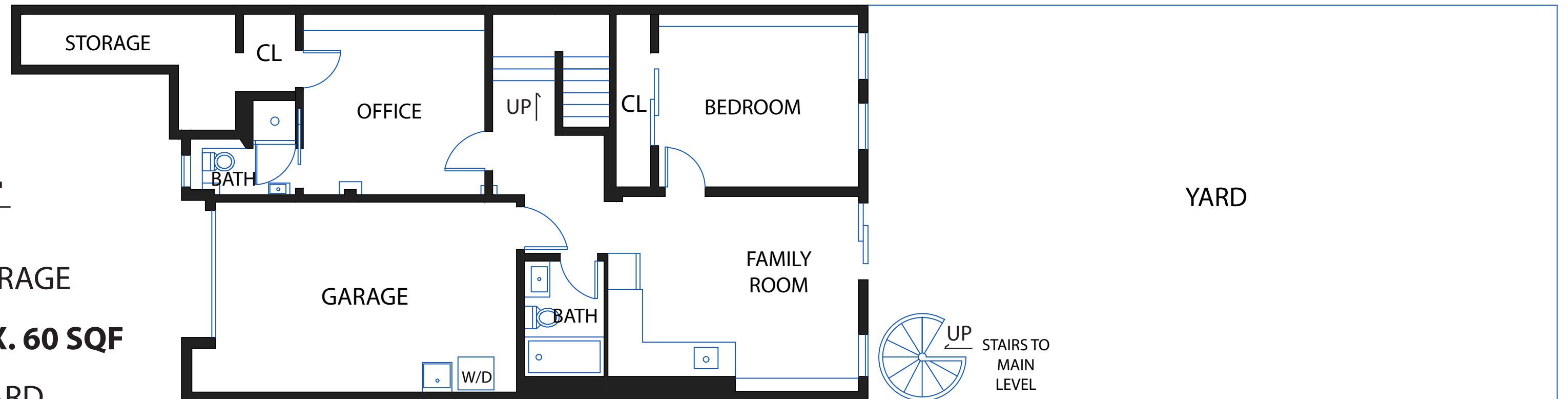
LOWER LEVEL

LIVING
APPROX. 782 SQF

STORAGE
APPROX. 60 SQF

GARAGE
APPROX. 250 SQF

YARD
APPROX. 1078 SQF



NOTE: FLOOR PLANS, SQUARE FOOTAGE, AND DIMENSIONS ARE APPROXIMATE AND NOT FOR CONSTRUCTION PURPOSES. PROSPECTIVE BUYERS SHOULD NOT RELY ON THESE PLANS, SQUARE FOOTAGE, AND DIMENSIONS IN MAKING THEIR PURCHASE DECISION AND SHOULD CAREFULLY VERIFY THE ABOVE ITEMS AND ALL OTHER INFORMATION HEREIN.